

CICD POUA AFL-CIO PROPOSAL

COTE FORD SITE



CICD POUA AFL-CIO PROPOSAL

Cote Ford Site, Mattapan



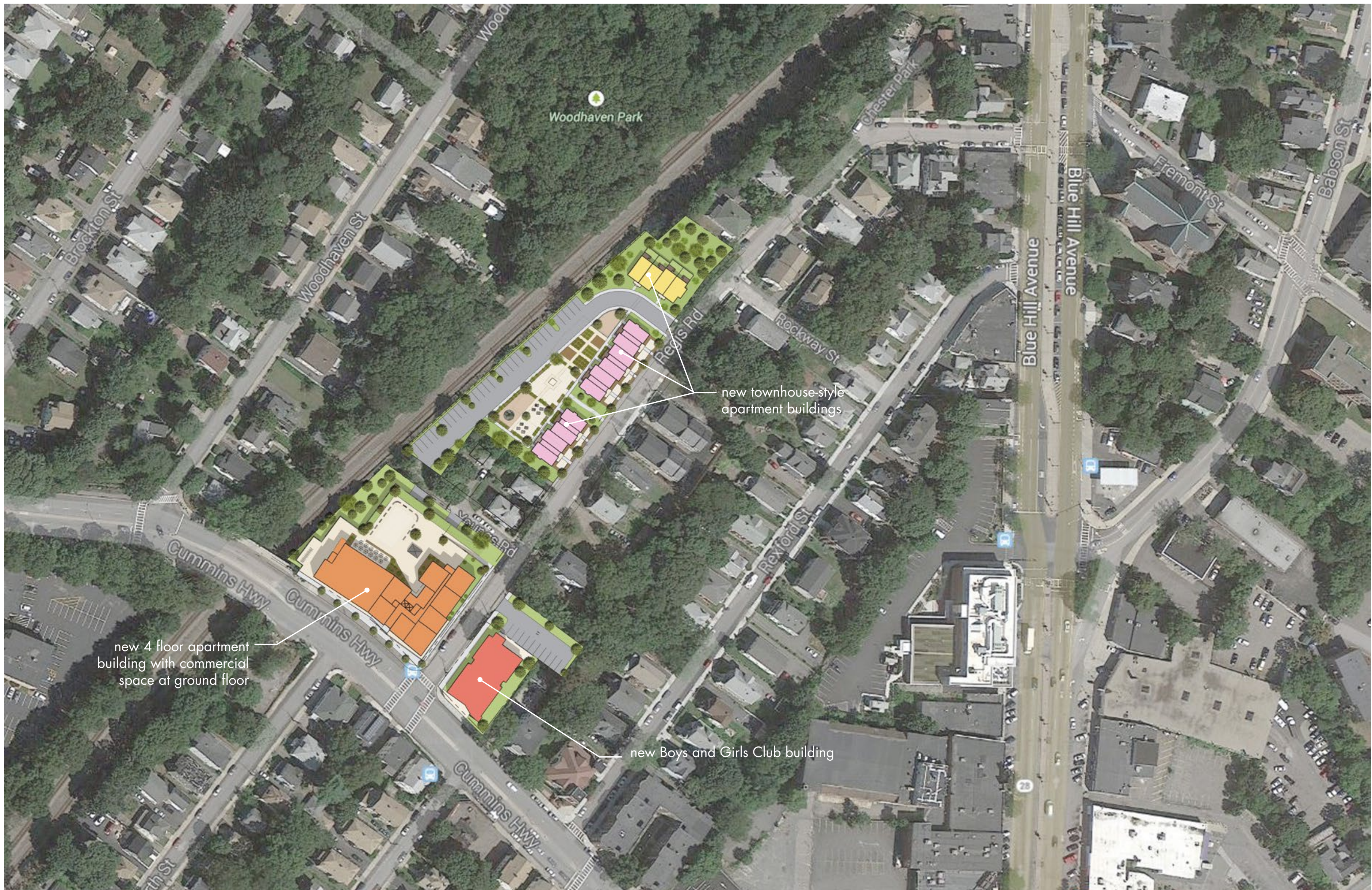
View of Regis St. Townhouses

- 70 Units of Housing
- 5,000 sf Community Oriented Retail Space
- 10,000 sf Boys & Girls Club Program Space
- 42,000 sf Green Open Space and Gardens
- 94 Off-Street Parking Spaces



Aerial View Looking Towards Cummins



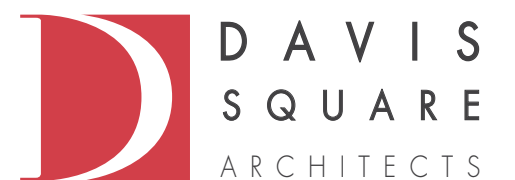


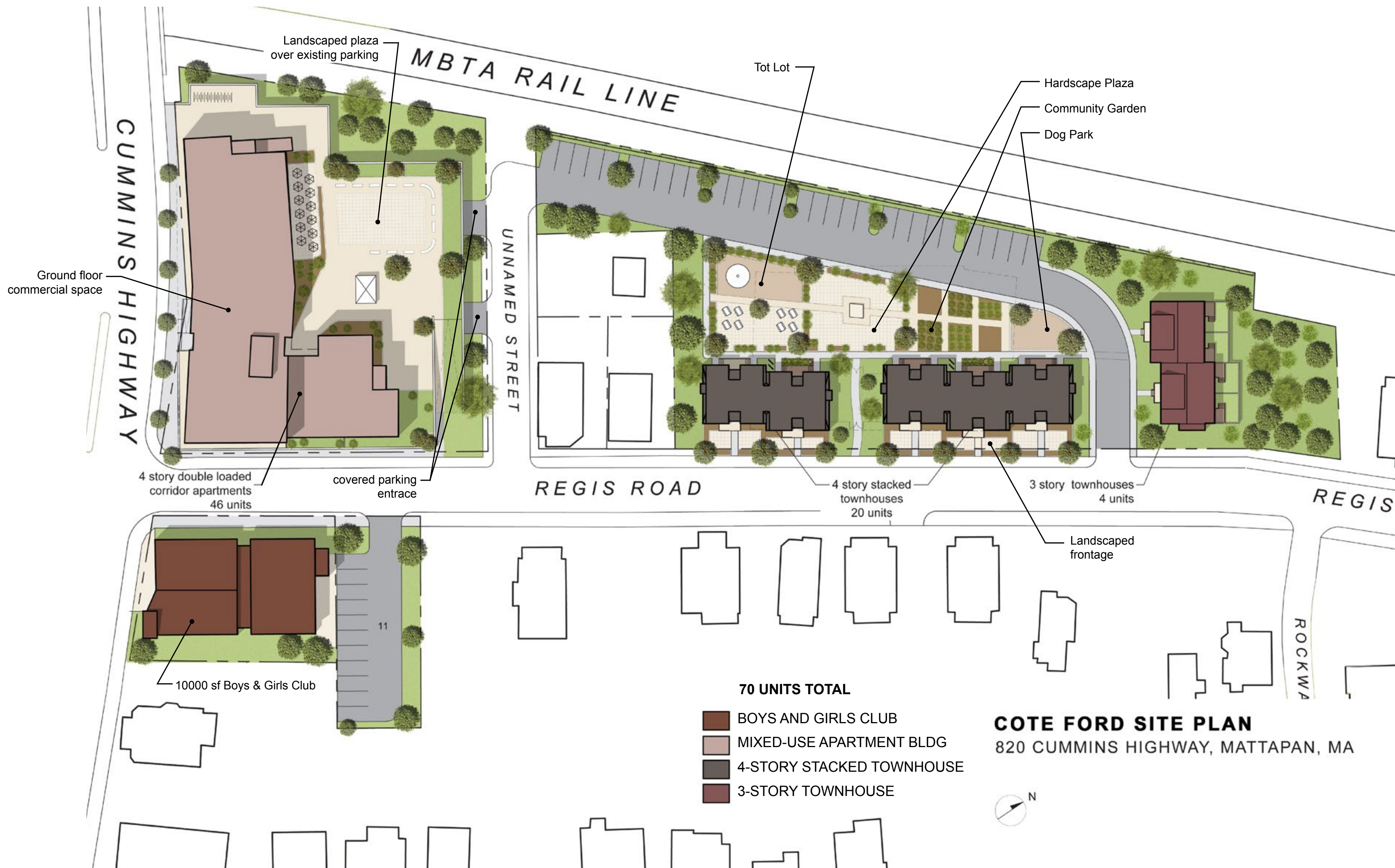
SITE OVERVIEW

COTE FORD PROPOSAL

MATTAPAN, MA

JULY 20, 2015

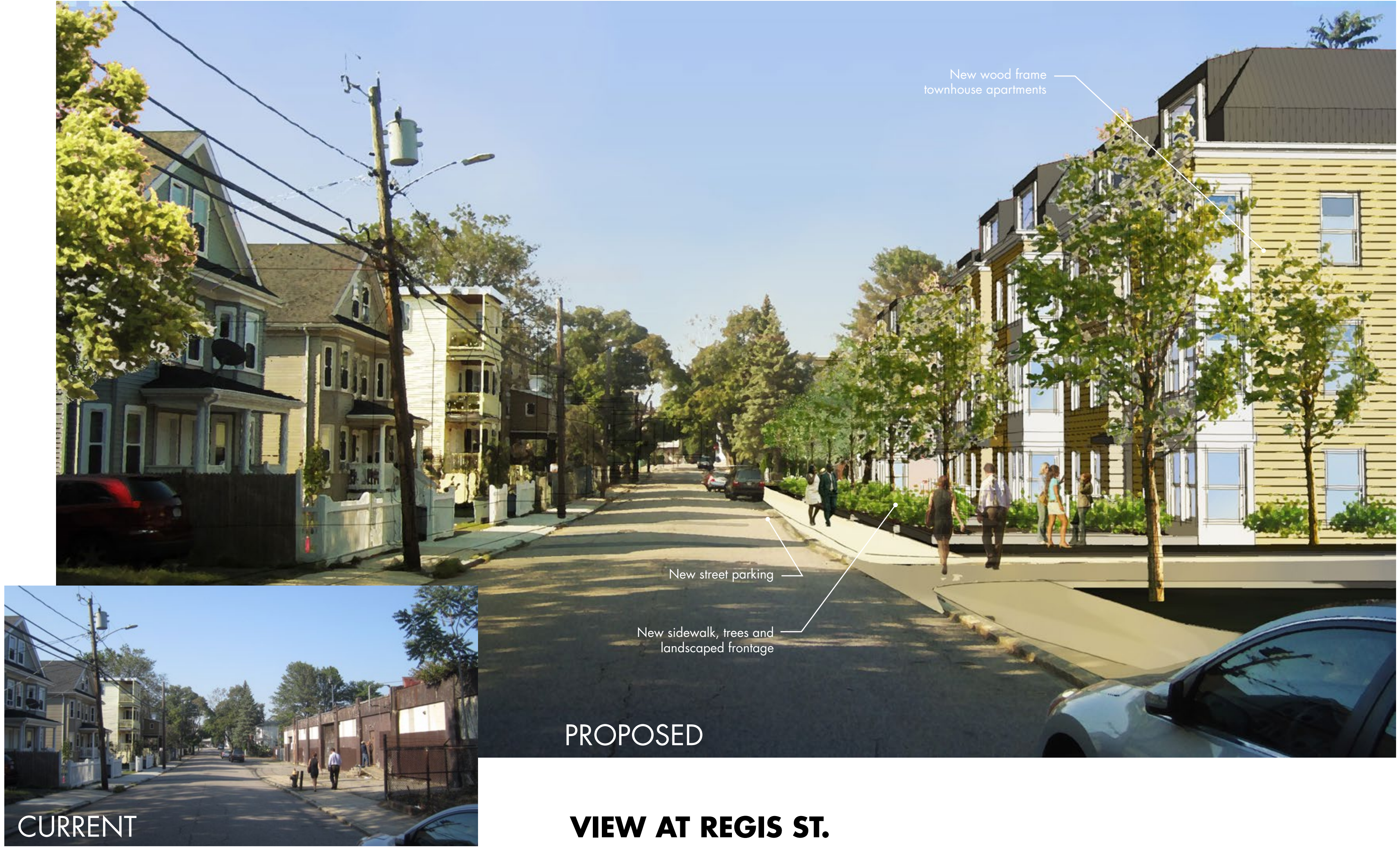




SITE PLAN



VIEW AT CUMMINS HWY



CURRENT

PROPOSED

**VIEW AT REGIS ST.
FACING CUMMINS HWY**



VIEW FROM REGIS STREET TOWARDS CUMMINS HIGHWAY



VIEW FROM REGIS STREET



VIEW FROM CUMMINS HIGHWAY AT 820 CUMMINS



VIEW FROM CUMMINS HIGHWAY

EXISTING COTE-FORD SITE